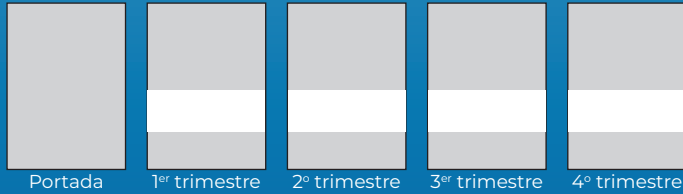


CALENDARIOS TRIMESTRALES



Portada 1er trimestre 2º trimestre 3er trimestre 4º trimestre



Calendario trimestral

- Tamaño: 33,5 x 48 cm
- Publicidad: 31,5 x 9 cm
- Papel estucado 135 g.

Información adicional

- Los calendarios trimestrales se sirven en paquetes de 50 unidades.



Vistas de España

Ref. 20.0226



Paisajes internacionales

Ref. 20.0227





Agua Ref. 20.0228



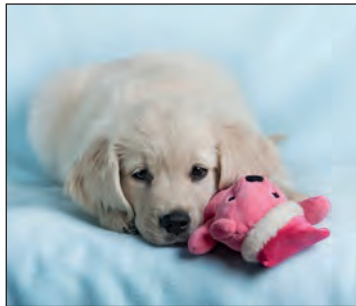
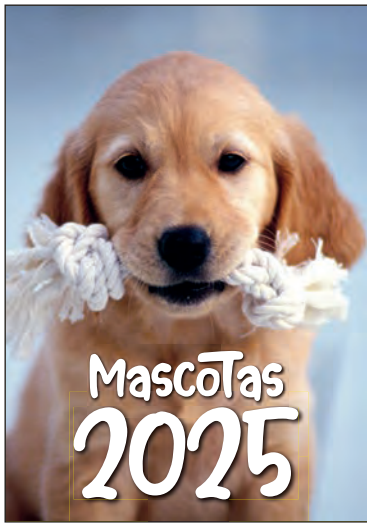
Infantil Ref. 20.0230



Arte Ref. 20.0231



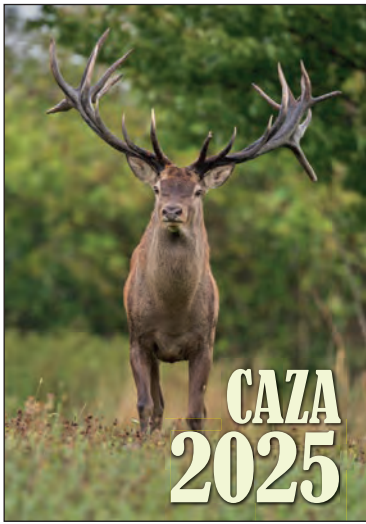
Chicas Ref. 20.0232



Mascotas Ref. 20.0233



Madrid Ref. 20.0234



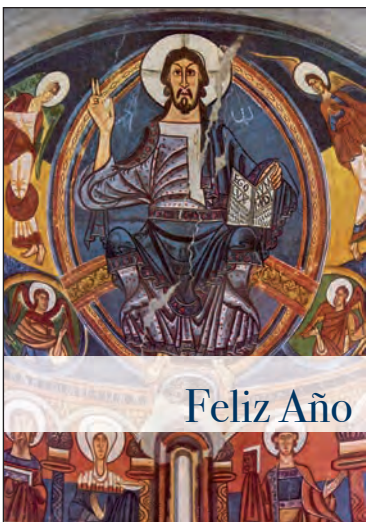
Caza

Ref. 20.0237



Coches

Ref. 20.0238



Religioso

Ref. 20.0239